

# *NACRA 17, 49er & 49erFX* US National Championship



**OAKCLIFF**

**Oakcliff Sailing**  
**Oyster Bay, NY, USA**  
**22 – 26 August 2013**

## SAILING INSTRUCTIONS

### **1 RULES**

- 1.1. The regatta will be governed by the rules as defined in *The Racing Rules of Sailing 2013-1016*. The 49er , 49er FX , and the NACRA 17 Class Rules. IHC stickers will not be required on masts and sails as well as country flags on sails.
- 1.2. RRS Appendix P, Immediate Penalties for breaking Rule 42 will apply.
- 1.3. US Sailing Prescriptions 61.4, 67, 70.5 (a) and 76.1 will apply.
- 1.4. If there is a conflict between languages the English text will take precedence.
- 1.5. If there is a conflict between the NOR and the Sailing Instructions, the Sailing Instructions shall take precedence. This modifies Rule 63.7.

### **2 IDENTIFICATION**

2.1 Identification on sails Appendix G3 will apply. Boats chartered or loaned for this event may carry national letters or a sail number in contravention of class rules. In no circumstances will a boat be permitted to race displaying the sail number of another boat in her class that is racing. This changes rule G3.

### **3. CAMERA and ELECTRONIC EQUIPMENT**

3.1 Competitors may be required to carry on board cameras, sound equipment or positioning equipment as specified by the organizing authority. A boat shall not be given redress based on a claim involving this equipment. This changes rule 62.1. All competitors are requested to upload video or photo's to the Oakcliff Sailing Facebook and website.

### **4. NOTICES TO COMPETITORS**

4.1 Notices to competitors will be posted on the official notice board located in the tent near the launching area.

## **5. CHANGES TO THE SAILING INSTRUCTIONS**

5.1 Any change to the sailing instructions will be posted not less than two hours before the scheduled warning signal on the day it will take effect, except that any change to the schedule of races, will be posted no later than 2000 hrs the day before it will take effect.

## **6. SIGNALS MADE ASHORE**

6.1 Signals made ashore will be displayed at the official flagpole located on the outside of the regatta tent. When a signal is displayed over a class flag, it applies to that fleet only.

6.2 If AP is hoisted ashore the first signal will not be less than 45 minutes from when AP is lowered.

6.3 When flag Y is displayed ashore, rule 40, Personal Buoyancy, applies at all times while afloat. The changes the Part 4 preamble.

6.4 If a change to the Sailing Instructions or Schedule is posted, a number flag corresponding to the change will be hoisted.

## **7.0 PLANED SCHEDULE OF RACES**

7.1 Friday 23 August 1500 Practice Race (All Classes)

Saturday 24 August 0900 Competitors meeting

1100 Championship Races

Sunday 25 August 1100 Championship Races

Monday 26 August 1100 Championship Races

(Prize Giving and Closing Ceremony as soon as possible after the end of the Medal Races.)

7.2 On Monday 26 August there will be no warning signal after 1700.

## **8.0 FORMAT OF RACING**

8.1 The regatta will consist of a championship series, with a non-discardable "Final Race" as described below.

8.2 Championship series

8.2.1 A Maximum of six (6) races per day for each fleet may be sailed at the discretion of the race committee.

8.2.2 One race is required to constitute the Championship round. When 5 or more Championship races have been completed, a boats series score will be the total of her race scores excluding her worst score. This changes Appendix A2.

8.3 Final race; shall be counted double and non-discardable. This shall be identified when code flag "G" is displayed with multiple sound signals PRIOR to the warning signal of the final race on August 26.

8.3.1 No warning signal for the Final Race will be made after 1700 on Monday August 26.

## **9 Class Flags**

9.1 The 49er class flag will be a GREY flag with a RED 49er class insignia in the background.

9.2 The FX class flag will be a WHITE flag with the BLUE FX Class insignia in the background.

9.3 The NACRA class flag will be a WHITE flag with a BLACK N 17 class insignia in the background.

## **10. RACING AREA**

10.1 Attachment A shows the location of the race area.

10.2 Race area will be posted on the notice board prior to 0900 each morning.

## **11. COURSES**

11.1 Attachment B describes the courses to be sailed.

11.2 No later than the warning signal, the race committee signal vessel may display the approximate compass bearing from the RC signal boat to Mark 1.

11.3 The gate may be replaced by a single mark to be left to port.

11.4 On the last leg to the finish, Mark 2b does not need to be honored.

## **12. MARKS**

12.1 Mark 1 (49er and FX) will be a Yellow Tetrahedron

12.2 Mark 1 (NACRA) will be a Orange Cylinder.

An offset mark may be in place, that mark shall be a small orange ball.

12.3 Mark 2 (gate) for all classes will be Orange Cylinders, if only one mark of the gate is in place, that mark shall be left to Port.

12.4 Starting line will be between the Oakcliff flag on the Signal boat and green inflatable mark on the port side of the line.

12.5 Finish line will be between the Oakcliff Flag on the RC boat and the Red buoy on the starboard side of the line.

### 13. **START**

13.1 A Class who's Warning Signal has not been made shall avoid the starting area during the starting sequence of the other Class.

13.3 The Race Committee Signal Boat may deploy a standoff buoy attached to the boat; this is part of the Signal Boat.

13.4 A boat starting later than four (4) minutes after her starting signal will be scored Did Not Start (DNS) without a hearing. (this changes RRS A4).

13.5 Boats whose sails numbers are displayed and *hailed* as BFD by a Race Committee boat close to Mark 1 following a Black Flag Start are to clear the racecourse.

### 14. **Change of Course**

14.1 To change the next leg of the course, the Race Committee will lay a new Mark (or move the finish line). When in a subsequent change a new Mark is replaced, it will be replaced by an original Mark.

14.2 The change mark for the NACRA will be a Yellow Tetrahedron with a black stripe. The change mark for the 49er and FX will be a Orange Cylinder with a Black stripe.

### 15. **The Finish**

15.1 The Finish Line will be between a staff displaying an Oakcliff Flag on a Race Committee boat and a red inflatable buoy.

### 16. **Time Limits**

16.1 The time limit and target time for each class (in minutes) are as follows:

<u>Class</u>	<u>First Mark Limit</u>	<u>Race Limit</u>	<u>Target Time</u>
NACRA	25	60	45
49er&FX	20	45	30

16.2 A race in which no boat in a Class rounds the first mark within the above First Mark Time Limit following the start or finishes with the Race Time Limit following the start will be abandoned.

16.3 Any boats not finishing within 15 minutes of the finish time of the first boat in her Class (which has sailed the course in compliance with RRS 28) will be scored Did Not Finish without a hearing. This changes RRS 35, A4 and A5.

16.4 Failure to meet the target time will not be grounds for redress. This changes RRS 62.1(a).

### 17. **Protests and requests for redress**

17.1 A boat intending to protest should, if practicable, inform the Race Committee immediately after finishing a race and provide the identity of the protested boat(s).

17.2 Protest forms will be available at the Desk (under the tent). Protests and requests for redress shall be written on such forms and delivered to the Desk in person or by e-mail to [Jkehoe@oakcliffsailing.org](mailto:Jkehoe@oakcliffsailing.org) within the protest time limit.

17.3 The protest time limit is one (1) hour after the Race Committee Finish Boat docks or when a race is abandoned ashore, this will be posted on the Official Notice Board.

17.4 Notices will be posted promptly following the filing of a protest within the protest time limit to inform competitors of hearings in which they are parties or named as witnesses. Protest hearings will be conducted at the Tent on the beach as soon as possible and in the approximate order in which they were filed.

17.5 A request for reopening a hearing shall be delivered to the protest desk under the tent:

a) Within the protest time limit following the last race of the day if the party requesting reopening was informed of the decision on the previous day;

b) No later than 30 minutes after the party requesting reopening was informed of the decision on that day. This changes RRS 66.

**18. Scoring**

18.1 The Low Point Scoring System, as provided in RRS Appendix "A" shall apply.

18.2 When fewer than five (5) races have been completed, a boat's score will be the total of her race scores. (This changes RRS A2)

18.3 When five (5) or more races have been completed, a boat's series score will be the total of her race scores excluding her worst score, except that the Final Race.

**19. Prizes**

19.1 Trophies will be awarded to the top three finishers in each class.

**20. Support and coach boats**

20.1 Except when rendering assistance to a boat in danger at the boat's request or at the request of the Race committee, support and coach boats shall stay 100 feet outside areas where boats are racing from the time of the Preparatory Signal for the first Class to start until the time the last boat finishes or the Race Committee signals a postponement, general recall or abandonment.

20.2 Support and coach boats shall be marked with national letters or a country flag.

20.3 The penalty for failing to comply with these requirements or the oral instructions of the Race committee or the Protest Committee will be at the discretion of the Protest Committee. The penalty may be imposed on any or all boats associated with the support or coach boat.

**21. Safety Requirements**

21.1 A boat that retires from a race or does not intend to start a scheduled race shall promptly report this to Race Committee via hailing and receive acknowledgement. If this is not possible, she shall promptly report her actions to the Protest desk on shore at the launching area.

21.2 Boats that are not leaving the harbor to race shall inform the Protest desk prior to the start of the first race of that day.

21.3 Prior to the Warning Signal of the first race she sails each day, each boat shall sail on starboard tack past the stern of the Signal Boat, and shall hail her sail number until acknowledged by the Race Committee. Failure to comply with this SI will result in a three-place penalty in the first race that day without a hearing. (This changes RRS 63.1)

**22. Radio Communication**

A boat shall neither make radio transmissions while racing nor receive radio communication not available to all boats. This restriction also applies to mobile devices.

**23. Trash Disposal**

23.1 Trash shall be placed aboard support or official boats.

**24. Disclaimer of Liability**

24.1 Competitors participate in the regatta entirely at their own risk. See RRS 4, Decision to Race. The Organizing Authority, Race Committee, host club, and their officers, employees and volunteers will not accept any liability for material damage or personal injury or death sustained in conjunction with or prior to, during, or after the regatta.

**25. Insurance**

25.1 Each participating boats shall be insure with valid third-party insurance with a minimum cover of US \$1,000,000 per occurrence of the equivalent.

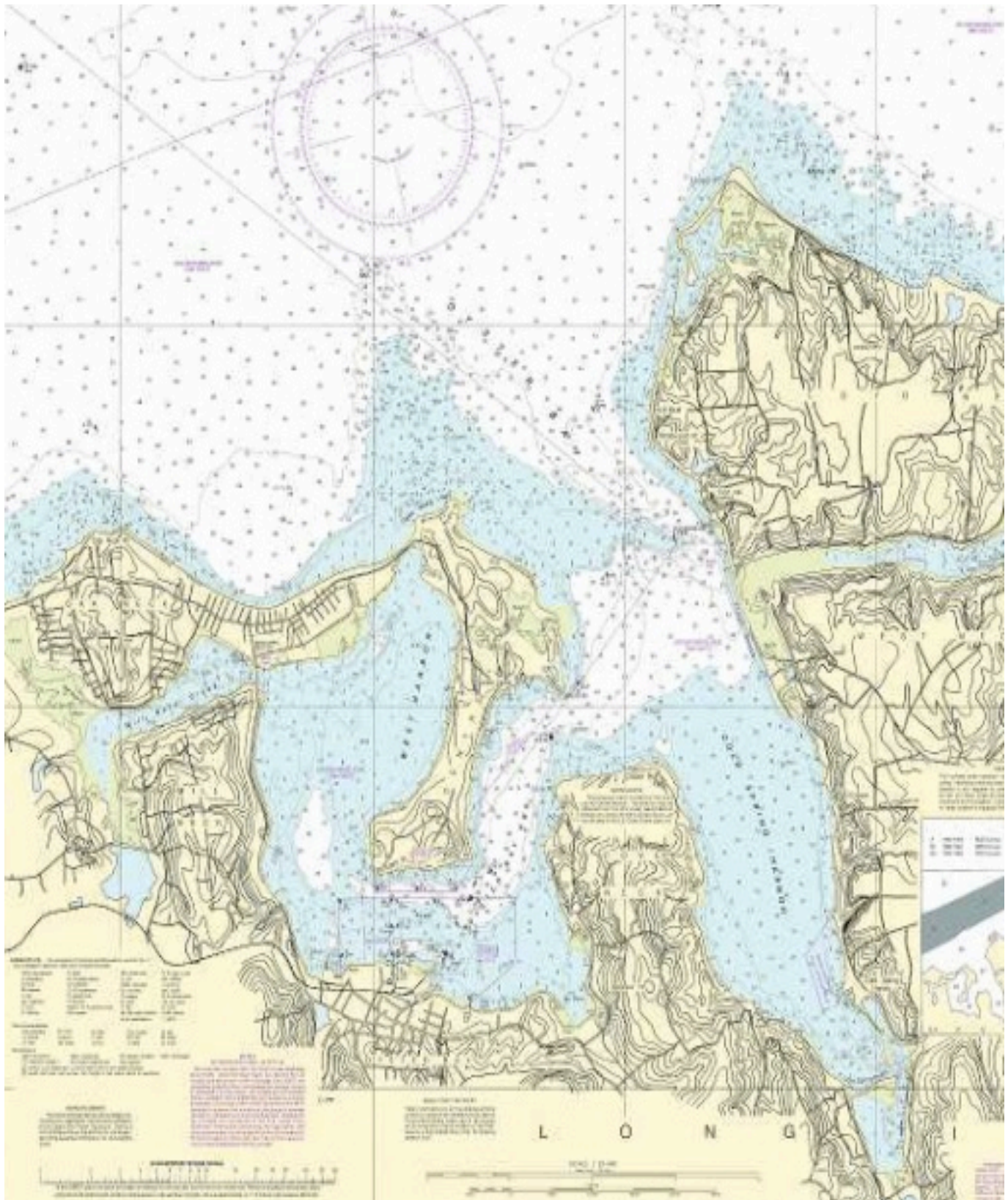
**26. Tides**

Friday 8/23	High 1:27 pm Low 7: 57 pm	Sunday 8/25	High 3:02 pm Low 9:38 pm
Sat 8/24	High 2:15 pm Low 8:47 pm	Monday	High 3:52 pm Low 9:49 am

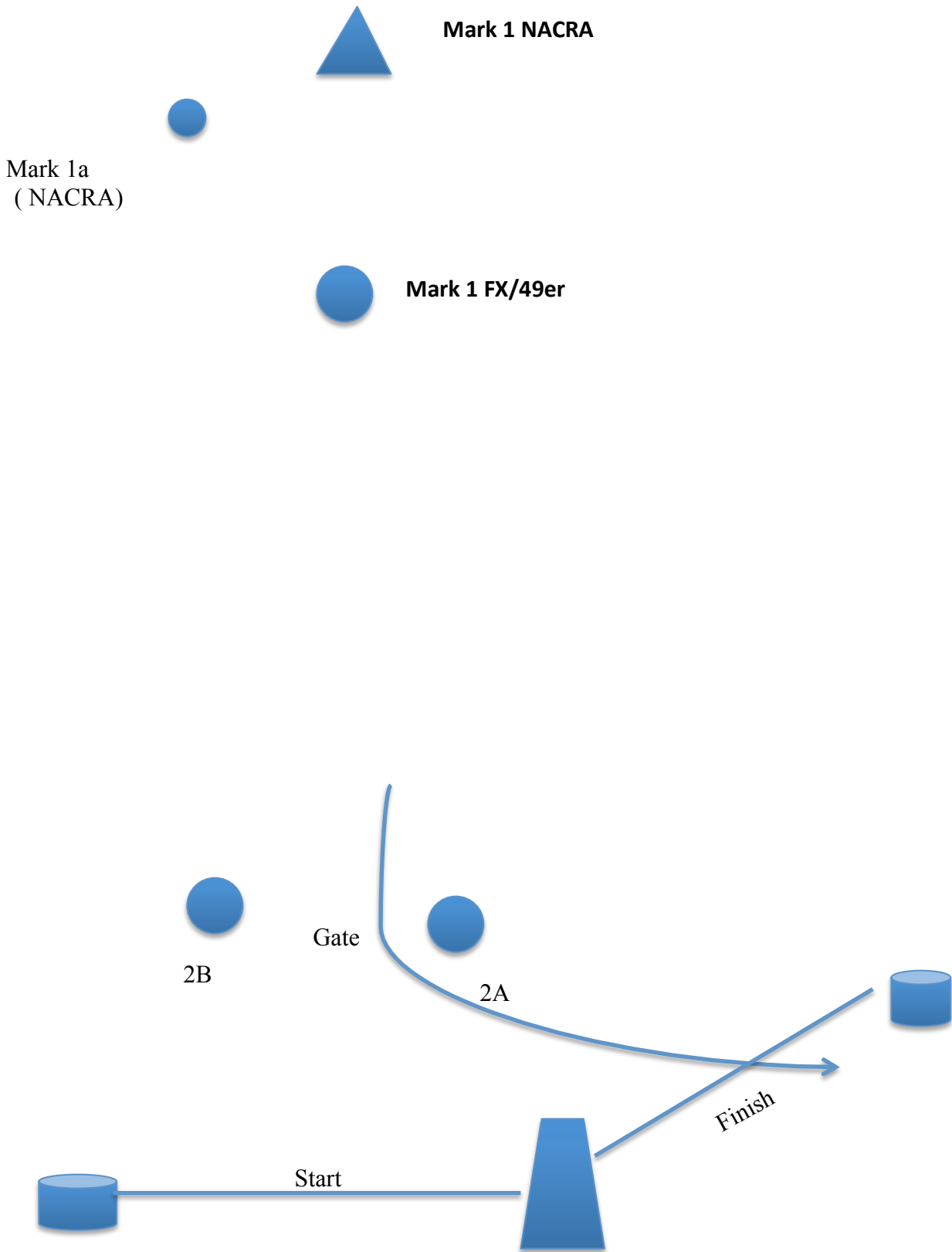
**27. Contacts**

Jay Kehoe PRO 410 320 3241 <a href="mailto:Jkehoe@oakcliffsailing.org">Jkehoe@oakcliffsailing.org</a>	Dawn Riley Executive Director 415 760 7642 <a href="mailto:Race@oakcliffsailing.org">Race@oakcliffsailing.org</a> Bill Simon Race Program Director 516 662 4926 <a href="mailto:BSimon@oakcliffsailing.org">BSimon@oakcliffsailing.org</a>
-------------------------------------------------------------------------------------------------------------	-----------------------------------------------------------------------------------------------------------------------------------------------------------------------------------------------------------------------------------------------------------

# ATTACHMENT A - RACING AREA



# Attachment B



## **Course:**

**NACRA- Start, Mark 1(NACRA), Mark 1a, Gate, Mark 1 (NACRA), Mark 1a, 2A, Finish  
49er/FX-Start, Mark 1 (49er/FX), Gate, Mark 1 (49er/FX), 2A, Finish**